

DREDGING NOTICE  
U.S. ARMY CORPS OF ENGINEERS  
ST. PAUL DISTRICT

NOTICE DATE: October 7 <sup>th</sup> , 2019	DREDGING CATEGORY: Imminent
MEETING DATE: If requested	MEETING TIME:
BOAT REQUIREMENT:	MEETING LOCATION:
DREDGE CUT NAME: Lower Zumbro	RIVER MILE: 743.5 – 744.5

**HISTORIC DATA**

Frequency: 61%	Avg. Quantity/Job: 32,552 yd <sup>3</sup>
Last Date Dredged: July 16 <sup>th</sup> , 2018	Avg. Quantity/Year: 19,930 yd <sup>3</sup>

**SURVEY DATA**

Date Surveyed: September 26<sup>th</sup>, 2019  
Water Surface Elevation: 660.4  
Low Control Pool Elevation: 659.4  
Net Difference: +1.0  
5 Day River Forecast: Slight increase then continue high

**DREDGING DATA**

Recommended Channel Width: 300 feet  
Recommended Dredging Depth: 11 feet  
Estimated Quantity: 45,866 yd<sup>3</sup>  
Type of Dredge: Contract Mechanical Plant 1  
Proposed Dredging Date: October 7<sup>th</sup>, 2019  
Estimated Duration: 22 Dredging Days  
Justification for Dredging: The channel is reduced to 200' between the 9' contours and closed between the 10.5' contours.

**MATERIAL PLACEMENT DATA**

Proposed Placement Site: Lost Island  
Location: 5-744.7-LWT  
Site Characteristics: This is a historically used temporary placement site.

If you have any questions concerning this project, or if you would like to request an on-site meeting, please call me at (651) 290-5155.

Dan Cottrell  
Dredging Manager

744.5

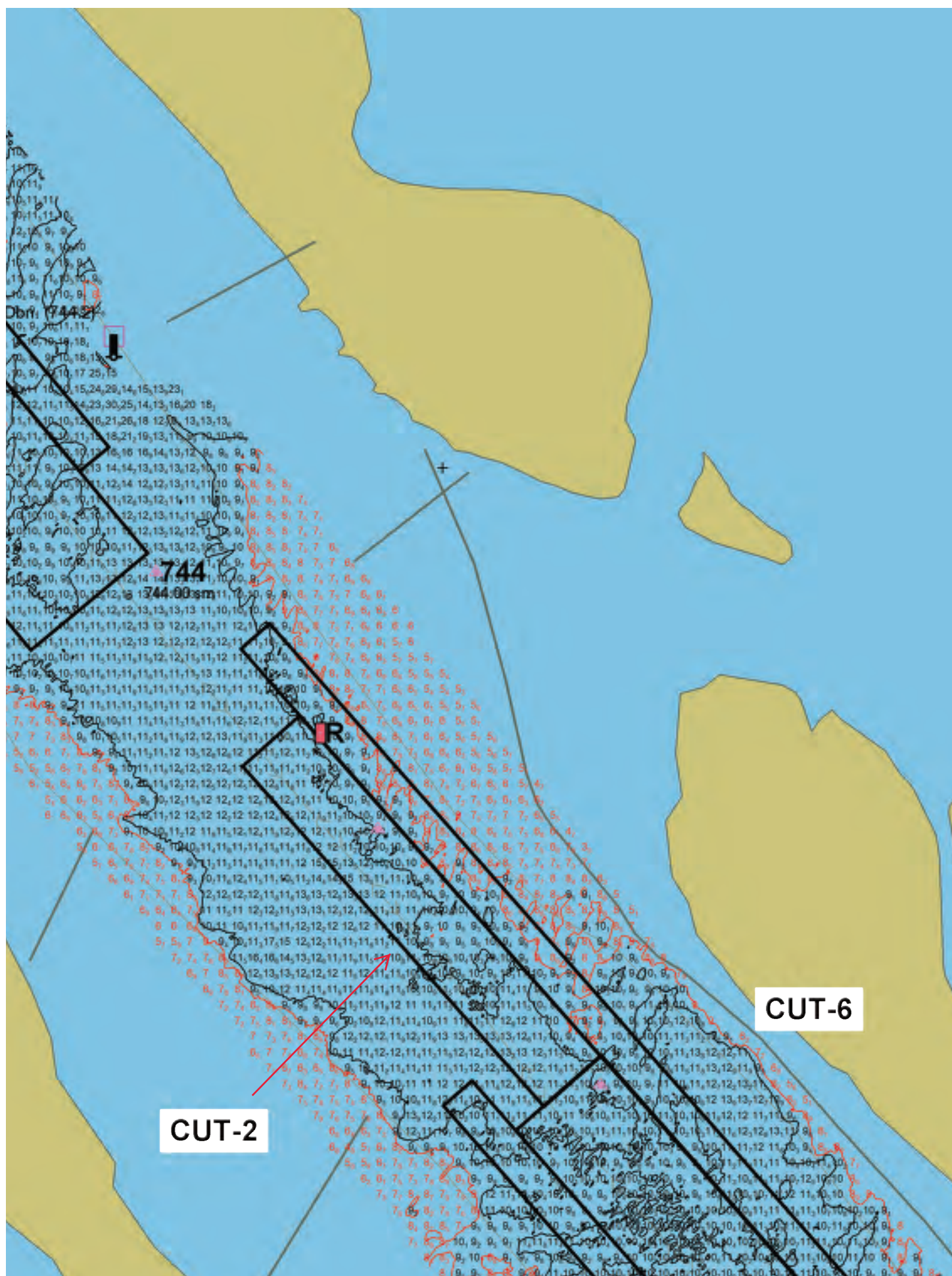
Pool 5, Lower Zumbro  
River Mile: 743.5 - 744.5  
Surveyed: September 26th, 2019  
Scale: 1" = 200'

CUT-5

CUT-1

Somerfield Island Upper Dam

+



The map displays the San Francisco Bay Area with the proposed San Francisco-Oakland Bay Bridge. Key features include:

- CUT-6**: A label indicating a specific location on the bridge route.
- CUT-3**: A label indicating another specific location on the bridge route.
- San Francisco Island Lt. (743.5)**: A label for a navigational aid or light.
- FI(2)R 5s**: A label for a navigational aid or light.
- 743.5**: A numerical value, likely representing depth or elevation.

The map is overlaid with a grid of numbers, likely representing depth or elevation data. The numbers are arranged in a grid pattern across the map area.

[illegible]

The map displays the San Francisco Bay area with the proposed San Francisco-Oakland Bay Bridge. Key features include:

- CUT-6**: A label indicating a specific section of the proposed bridge.
- CUT-3**: A label indicating another section of the proposed bridge.
- San Francisco Island Lt. (743.5)**: A label for a specific location on the island.
- FI(2)R 5s**: A label for a specific location on the island.
- 743.5**: A numerical label near the bottom of the map.

The map also shows the city of San Francisco, the Golden Gate, and the bay. The proposed bridge route is shown as a dashed line, and the existing Golden Gate Bridge is shown as a solid line. The map is labeled with 'CUT-6' and 'CUT-3' indicating specific bridge sections. The map also shows the 'San Francisco Island Lt. (743.5)' and the 'FI(2)R 5s'.

The map displays the San Francisco Bay area with the proposed San Francisco-Oakland Bay Bridge. Key features include:

- CUT-6**: A label indicating a specific section of the proposed bridge.
- CUT-3**: A label indicating another section of the proposed bridge.
- San Francisco Island Lt. (743.5)**: A label for a specific location on the island.
- FI(2)R 5s**: A label for a specific location on the island.
- 743.5**: A numerical label near the bottom of the map.

The map also shows the city of San Francisco, the Golden Gate, and the bay. The proposed bridge route is shown as a dashed line, and the existing Golden Gate Bridge is shown as a solid line. The map is labeled with 'CUT-6' and 'CUT-3' indicating specific bridge sections. The map also shows the 'San Francisco Island Lt. (743.5)' and the 'FI(2)R 5s'.